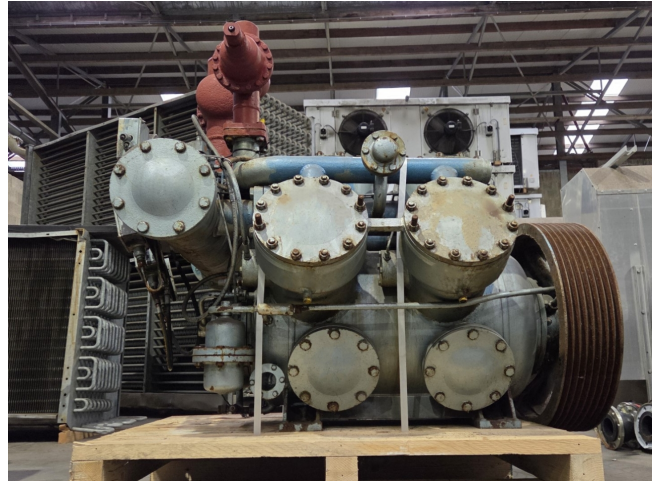


Grasso RC 611

Specifications

Marka	Grasso
Typ	RC 611
Czynnik chłodzący	Freon
kW at 0°C/+40°C	588,4
kW at -5°C/+40°C	482,8
kW at -10°C/+40°C	391,1
kW at -20°C/+40°C	243,1
kW at -30°C/+40°C	134,7
Ciśnieniowe przełączniki bezpieczeństwa	✓
Wskaźniki ciśnienia	✓
Okno widokowe	✓
m ³ / h	798
Rozmiary	1600x1300x1450 mm (LxWxH)
Stock	1



Description

Used Grasso RC 611

Used Grasso RC 611 reciprocating compressor on Freon. Complete with pressure and safety switches/gauges and a sight glass. The compressor has a displacement of 798 m³/h at 1000 RPM.

*Why choose for HOSBV? We're not only the largest used refrigeration specialist in Europe, but also, we deliver all equipment including an extensive test, warranty and industrial cleaning.

*Optional we can also perform a new paint job and arrange the logistics.

